

INSTALLATION INSTRUCTIONS FOR INSTALLING A COIN INSERT REPLACEMENT KIT IN A NATIONAL VENDORS[®], CROWN SEVENTY TWO[®], SC-141 ELECTRIC SNACK/CANDY MERCHANDISER

CHECK THE PARTS RECEIVED IN THE KIT WITH THE PARTS LIST IN THESE INSTRUCTIONS. FIGURE 1 SHOWS ALL THE PARTS IN THE KIT. IF ANY PARTS ARE MISSING, CONTACT NATIONAL VENDORS' PARTS DEPARTMENT IMMEDIATELY.

These instructions cover the procedures for installing a Coin Insert Replacement Kit in a Crown Seventy Two, SC-141 Electric Snack/Candy Merchandiser to enable the Merchandiser to accept Dollar Coins.

Read these instructions carefully and thoroughly before installing the Kit. Retain these instructions for part number and installation information.

Kit, Part Number 141-2086, contains the following parts:

Part Number	Description	Quantity
141-2085	Coin Insert Casting	1
141-2084	Coin Block	1
230-2053	Cup Spacer	4
121-2142	No.8-32 x 7/16 PHS T/C Screw W/LW	2
9900-161	No.8-32 x 1/2 PHS S/T Screw	3
141-2087	Installation Instructions	1
	* * *	

TO INSTALL THE KIT

A. PARTS REMOVAL

1. Unlock and open the Cabinet Door.

CAUTION

Before proceeding any further, carefully remove the Fluorescent Lamp and Tube Diffuser, located next to the Selector Assembly to prevent breakage during installation of the Kit.

2. Remove all attaching parts from the Coin Insert Trim Casting and remove Coin Insert Trim Casting from the Cabinet Door. See Figure 2.

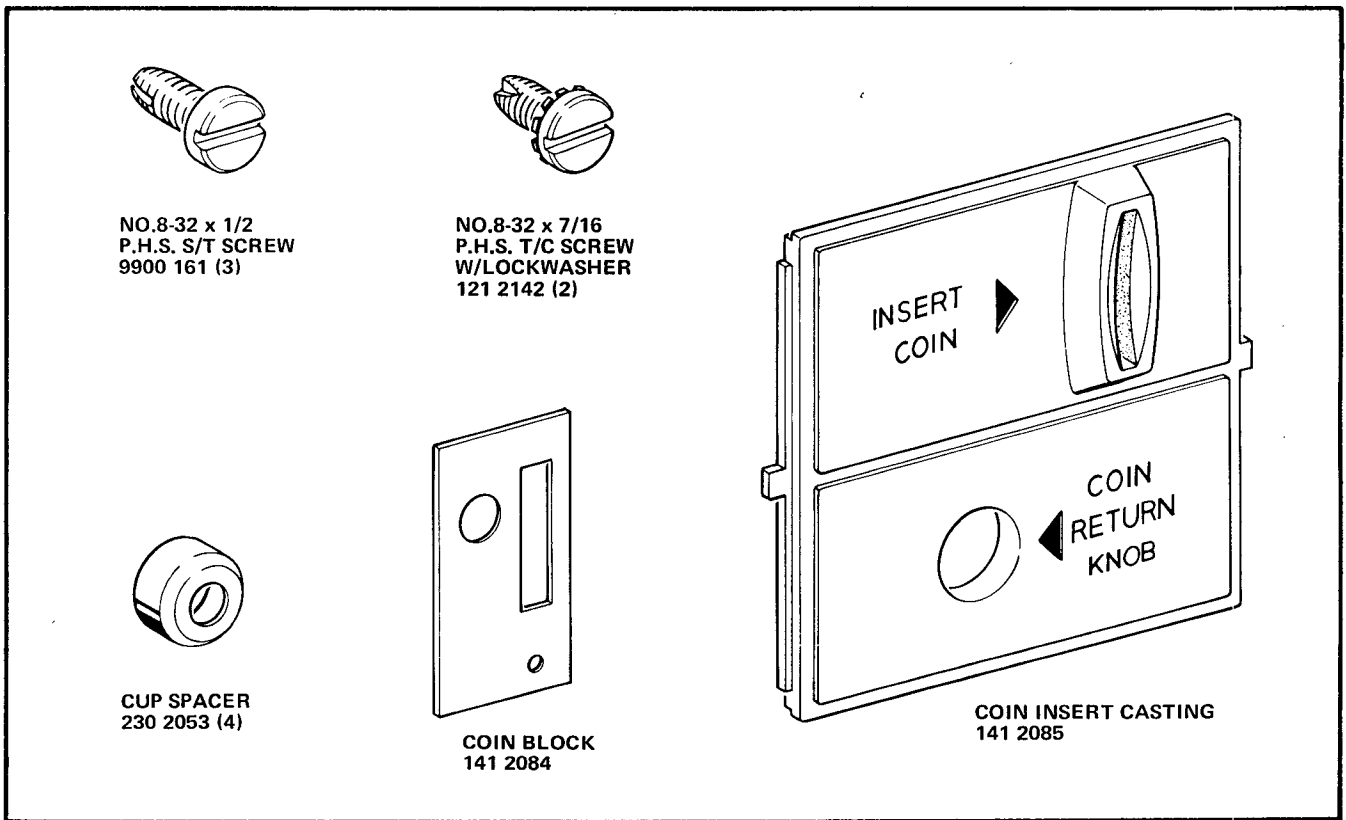


FIGURE 1

CRANE

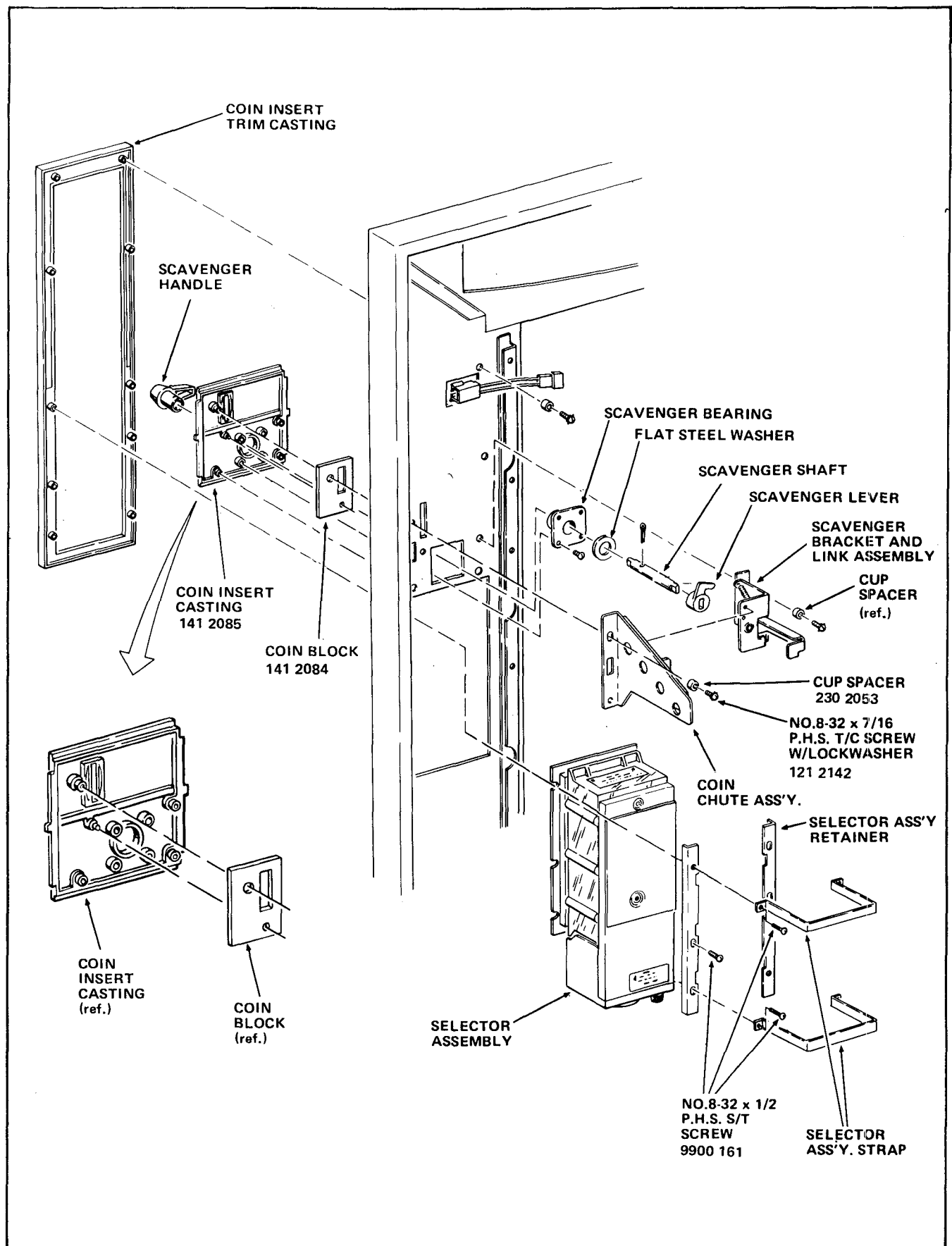


FIGURE 2

CAUTION

After removing the attaching parts which secure the Coin Insert Trim Casting, the Selector Assembly will also become unfastened from the Cabinet Door. Gently lower the Selector Assembly out of the way until reassembly.

NOTE

Retain all attaching parts removed during the parts removal procedures. All Screws, Cup Spacers, Straps and Retainers will be used in installation of the Kit.

3. Remove the Coin Insert Chute Assembly from the Merchandiser by removing the three Screws and two Cup Spacers securing the Coin Insert Chute Assembly. See Figure 2.
4. Remove the Scavenger Bracket and Link Assembly from the Merchandiser by removing the two Screws securing the Assembly to the Merchandiser. See Figure 2.
5. Remove the Scavenger Lever from the Scavenger Shaft.

NOTE

Take note of the position of the Scavenger Lever in relation to the Scavenger Handle to assure correct positioning of these parts during reassembly. See Figure 2.

6. Remove the Cotter Pin from the Scavenger Shaft.
7. Remove the Flat Steel Washer, Scavenger Shaft, and Scavenger Handle from the Merchandiser. See Figure 2.
8. Remove the Scavenger Bearing and Coin Insert Casting from the Merchandiser by removing the four Screws securing the Scavenger Bearing to the Coin Insert Casting. See Figure 2.

B. INSTALLATION OF THE KIT**NOTE**

The Coin Block included in the kit prevents the insertion of dollar coins. If in the future the Merchandiser is equipped with a Coin Mechanism which accepts dollar coins the Coin Block must be removed.

1. Fit the Coin Block, part number 141-2084, on the Coin Insert Casting, part number 141-2085, as shown in Figure 2. Both parts are included in the kit.

2. With the Coin Block in position on the Coin Insert Casting, install the Casting and Scavenger Bearing on the Merchandiser, securing with the four Screws removed in Step A-8.
3. Install the Scavenger Shaft, Flat Steel Washer, and Scavenger Handle into the Merchandiser. See Figure 2.
4. Insert Cotter Pin removed in Step A-6, into the Scavenger Handle and Scavenger Shaft holding the Scavenger Handle, Scavenger Shaft, and Flat Steel Washer in place. See Figure 2.
5. Attach the Scavenger Lever to the end of the Scavenger Shaft with the Scavenger Lever pointing in the same direction as the Scavenger Handle. See Figure 2.
6. Secure the Scavenger Bracket and Link Assembly in place with the two Screws removed in Step A-4.

NOTE

Before securing the Scavenger Bracket and Link Assembly into position, be certain that the Scavenger Lever is resting on top of the Scavenger Link and in the proper position. See Figure 2.

7. Install the Coin Insert Chute Assembly in the Merchandiser, attaching with the three Screws and two Cup Spacers removed in Step A-3.
8. Hold the Coin Insert Trim Casting into position on the Cabinet Door and partially secure with the upper four Screws and Cup Spacers removed in Step A-2. See Figure 2.
9. Hold the Selector Assembly into position on Cabinet Door and secure the Selector Assembly and Coin Insert Trim Casting with the remaining attaching parts removed in Step A-2. See Figure 2.

NOTE

1. Install the Selector Assembly Retainers first, then install the Selector Assembly Straps. See Figure 2.
2. Make certain the notch in the Selector Assembly clears the Scavenger Link.
10. Reinstall the Fluorescent Lamp and Tube Diffuser.
11. Close and Lock the Cabinet Door.